

FOR LEASE

KIDDER.COM

BEAR CREEK DISTRIBUTION CENTER

*12,225 SF - 49,446 SF Industrial
Distribution Space For Lease In
The Woodinville Submarket*



6018 234TH ST SE | WOODINVILLE, WA 98072

km Kidder
Mathews

BEAR CREEK DISTRIBUTION CENTER



Property Highlights

49,446 SF Building total*

24,794 SF Suite A/B

12,225 SF Suite C

12,427 SF Suite D

24' clear height

12 dock-high doors

4 grade-level door

2.3/1,000 SF parking ratio

Power 1200A, 277/480V

Call for rates

Available 11/01/2026

*Can be further demised to four suites

TODD GAUTHIER

425.450.1118

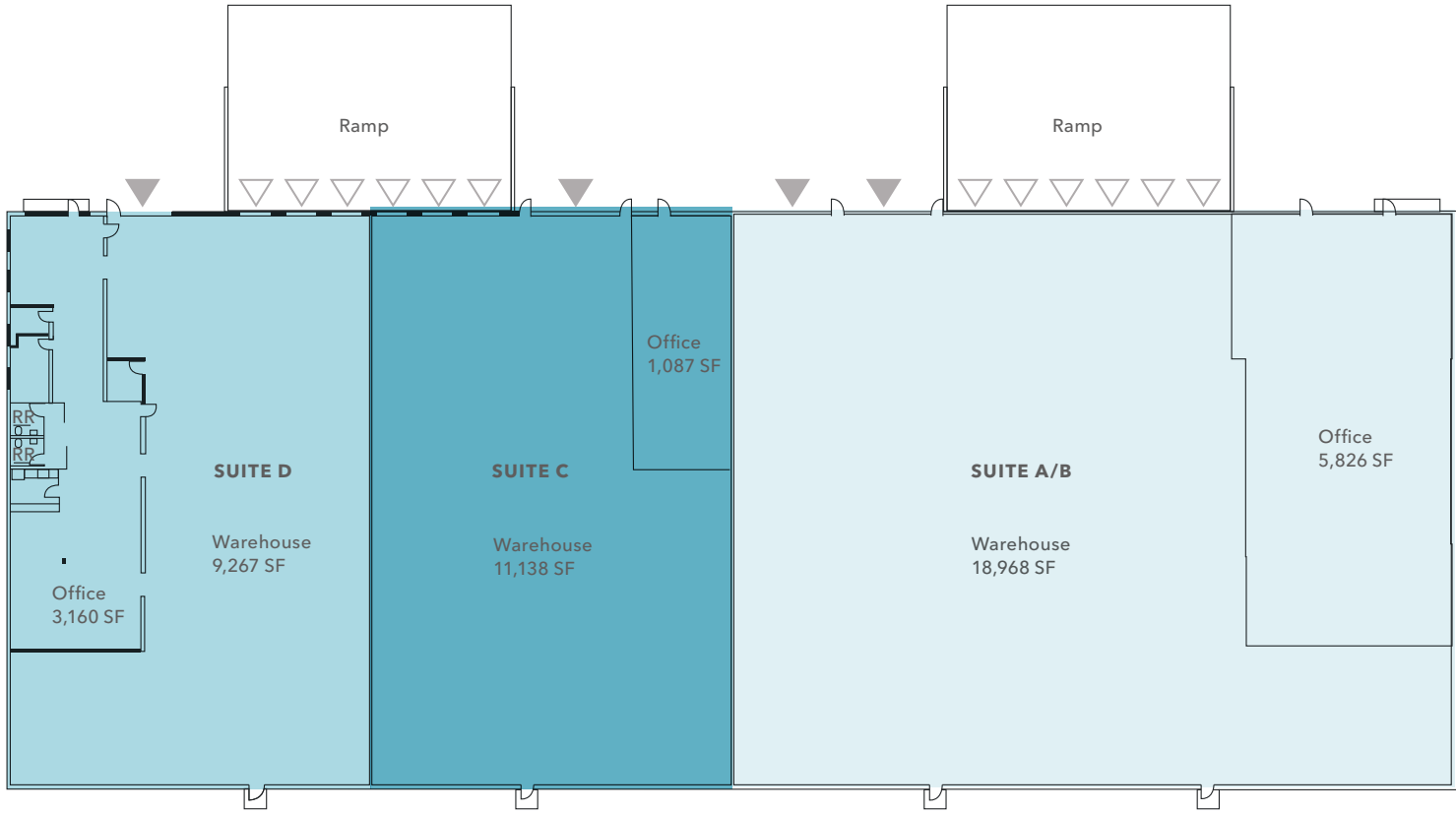
todd.gauthier@kidder.com

JASON BLOOM

425.450.1102

jason.bloom@kidder.com

FLOOR PLANS



49,446 SF

AVAILABLE

24,794 SF

SUITE A/B

12,225 SF

SUITE C

12,427 SF

SUITE D

CALL

BROKERS FOR RATES



Dock-high loading

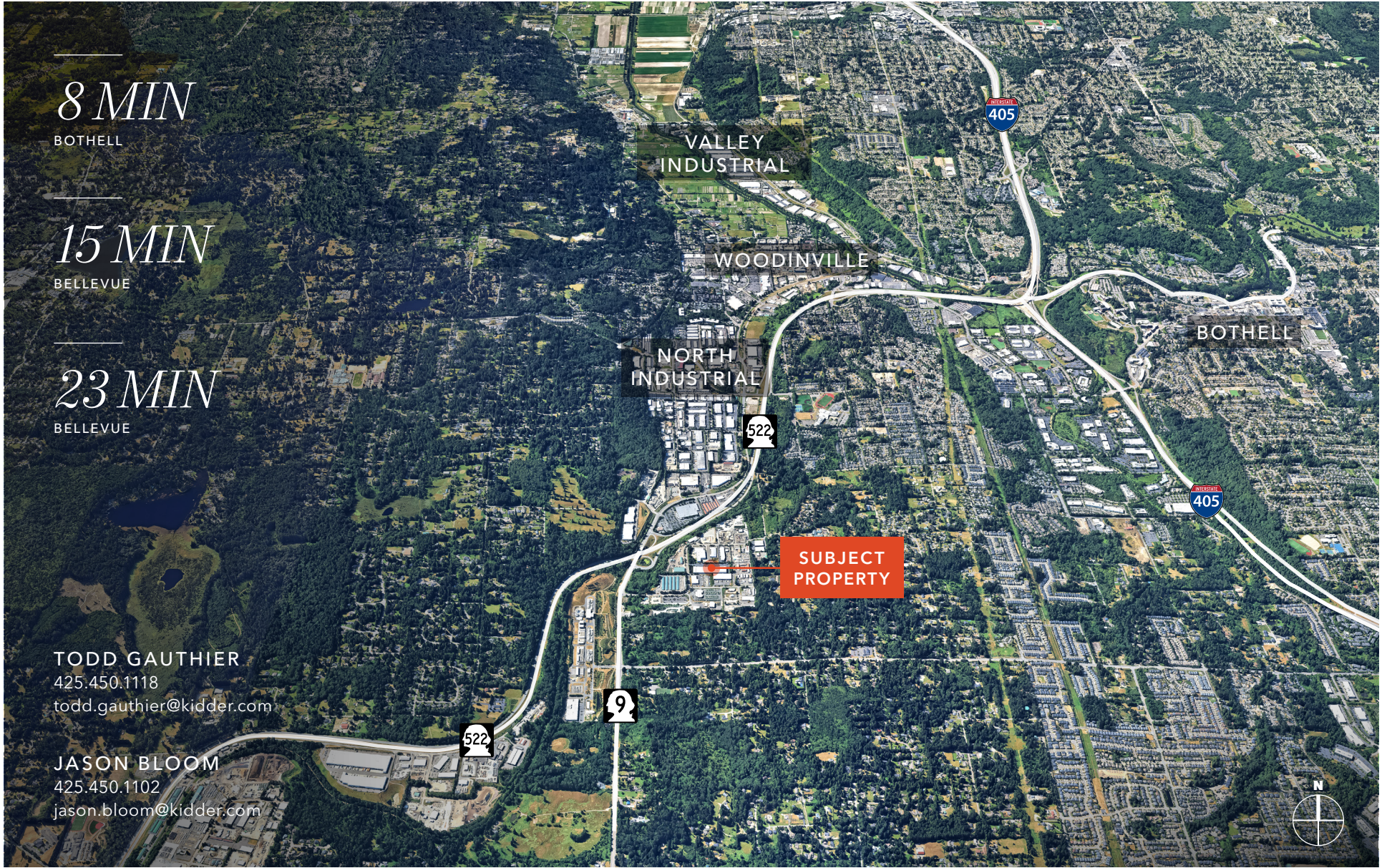


Grade-level loading

BEAR CREEK DISTRIBUTION CENTER



BEAR CREEK DISTRIBUTION CENTER



8 MIN

BOTHELL

15 MIN

BELLEVUE

23 MIN

BELLEVUE

TODD GAUTHIER

425.450.1118

todd.gauthier@kiddier.com

JASON BLOOM

425.450.1102

jason.bloom@kiddier.com



BEAR CREEK DISTRIBUTION CENTER

*For more information about
this property, please contact*

TODD GAUTHIER
425.450.1118
todd.gauthier@kidder.com

JASON BLOOM
425.450.1102
jason.bloom@kidder.com

KIDDER.COM

This information supplied herein is from sources we deem reliable. It is provided without any representation, warranty, or guarantee, expressed or implied as to its accuracy. Prospective Buyer or Tenant should conduct an independent investigation and verification of all matters deemed to be material, including, but not limited to, statements of income and expenses. Consult your attorney, accountant, or other professional advisor. All Kidder Mathews designs are the sole property of Kidder Mathews. Branded materials and layouts are not authorized for use by any other firm or person.

