

16224 & 16240, S AVALON BLVD | CARSON, CA

Low Coverage, Last-Mile South Bay Industrial

FOR LEASE

±54,767 SF
Building on
±222,196 SF Land

Owned and Operated By:



FOR MORE INFORMATION, PLEASE CONTACT

ROBERT FLORES

Executive Vice President
Lic. 01848000
+1 310 363 4826
rob.flores@cbre.com

BRIAN HELD

Senior Vice President
Lic. 01100518
+1 310 363 4825
brian.held@cbre.com

JOEY WAGMAN

Associate
Lic. 02133862
+1 310 363 4684
joey.wagman@cbre.com

ROBERT SPRATLIN

Associate
Lic. 02236093
+1 310 363 4827
robert.spratlin@cbre.com

Exclusively Marketed By:

CBRE



PROPERTY INFORMATION

CBRE is pleased to present this low-coverage, last-mile industrial facility in the heart of the South Bay Submarket.

Located a mere 8 miles north of the largest Port complex in North America, this site features an approximate 54,767 SF building on approximately 222,196 SF of land.

With 9 dock-high loading positions and excess land with striped parking for at least 89 trailers and 25 tractors, this site is uniquely positioned to serve the needs of South Bay users seeking to capture proximity to both the Ports and the dense and diverse local population base.

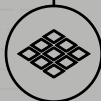
±2.5 Acres of Land with
89 Striped Trailer and 25 Tractor
Parking Stalls

Three Curb-Cuts for Easy Ingress/
Egress and Traffic Flow

Ideal Access to 91, 110, 710, 105
and 405 Freeways

Over \$1MM in New 7.5" Reinforced
Concrete Yard and New Slurry

Professionally Owned and Operated
by Lift Partners



Vacant and Ready for Immediate Occupancy



±54,767 SF of Warehouse Space on Excess Land



±1,200 SF of Fully Refurbished Office Space



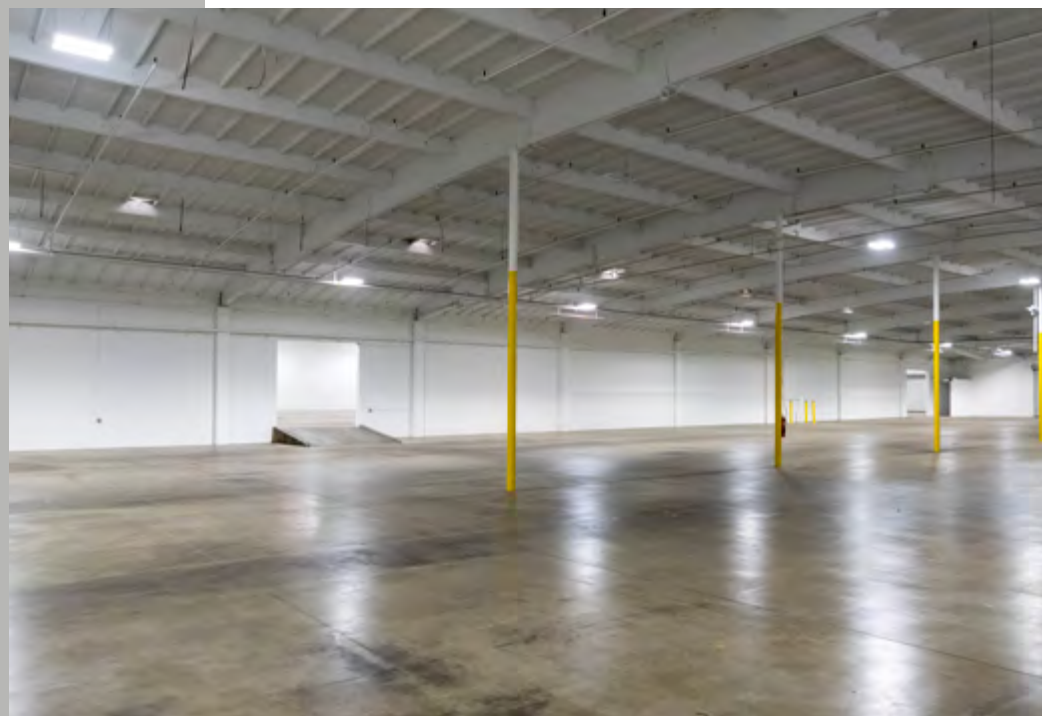
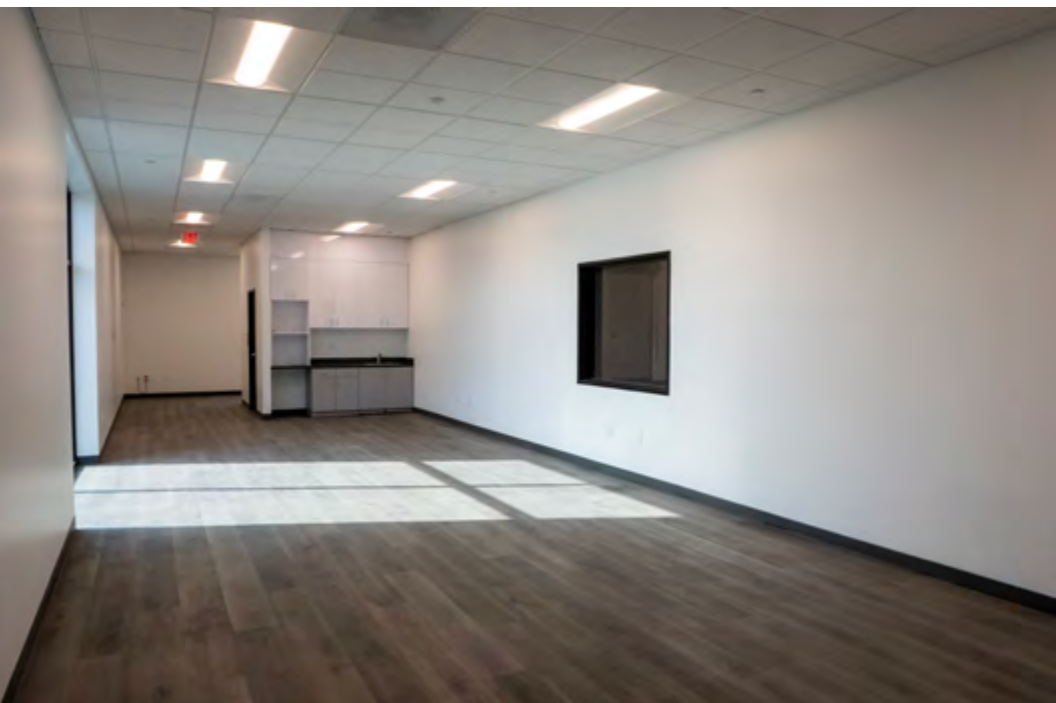
9 Dock High Positions / 1 Ground Level Ramp



14' - 18' Minimum Clear



INTERIOR PHOTOS



EXTERIOR PHOTOS



SITE PLAN



AREA OVERVIEW

LA/LB PORT COMPLEX

SITE PROXIMITY:



2.5 MILES TO BLUE LINE METRO



9 MILES TO LAX



REGIONAL CONNECTIVITY VIA 91,
105, 110, 405, 710 FREEWAYS



8 MILES TO PORTS OF
LOS ANGELES & LONG BEACH

BEACH CITIES



16224 & 16240

S AVALON BLVD | CARSON, CA

AVALON BLVD

ALONDRA BLVD

MAIN ST

FIGUEROA ST

BROADWAY

REDONDO BEACH BLVD

110

405

91

405

110



16224 & 16240

S AVALON BLVD | CARSON, CA

Low-Coverage, Last-Mile South Bay Industrial

©2026 CBRE, Inc. All rights reserved. This information has been obtained from sources believed reliable but has not been verified for accuracy or completeness. CBRE, Inc. makes no guarantee, representation or warranty and accepts no responsibility or liability as to the accuracy, completeness, or reliability of the information contained herein. You should conduct a careful, independent investigation of the property and verify all information. Any reliance on this information is solely at your own risk. CBRE and the CBRE logo are service marks of CBRE, Inc. All other marks displayed on this document are the property of their respective owners, and the use of such marks does not imply any affiliation with or endorsement of CBRE. Photos herein are the property of their respective owners. Use of these images without the express written consent of the owner is prohibited.

FOR MORE INFORMATION, PLEASE CONTACT

ROBERT FLORES

Executive Vice President
Lic. 01848000
+1 310 363 4826
rob.flores@cbre.com

BRIAN HELD

Senior Vice President
Lic. 01100518
+1 310 363 4825
brian.held@cbre.com

JOEY WAGMAN

Associate
Lic. 02133862
+1 310 363 4684
joey.wagman@cbre.com

ROBERT SPRATLIN

Associate
Lic. 02236093
+1 310 363 4827
robert.spratlin@cbre.com

**Lift
Partners**
CBRE