

Improvements Underway

14700

14700 NE 95TH ST BUILDING

*10,039 SF Industrial/Office Space Available
for Lease in the Redmond Willows Submarket*

14700 NE 95TH ST | REDMOND, WA

km Kidder
Mathews

14700 NE 95TH ST BUILDING

*Industrial / Office Building in
the Redmond Willows Submarket
Available for Lease*

FEATURES

24' clear height

Dock- and grade-level loading available

Potential for outside storage

Available now

RECENT BUILDING IMPROVEMENTS

Modern building facade upgrades

High-end landscaping

New asphalt



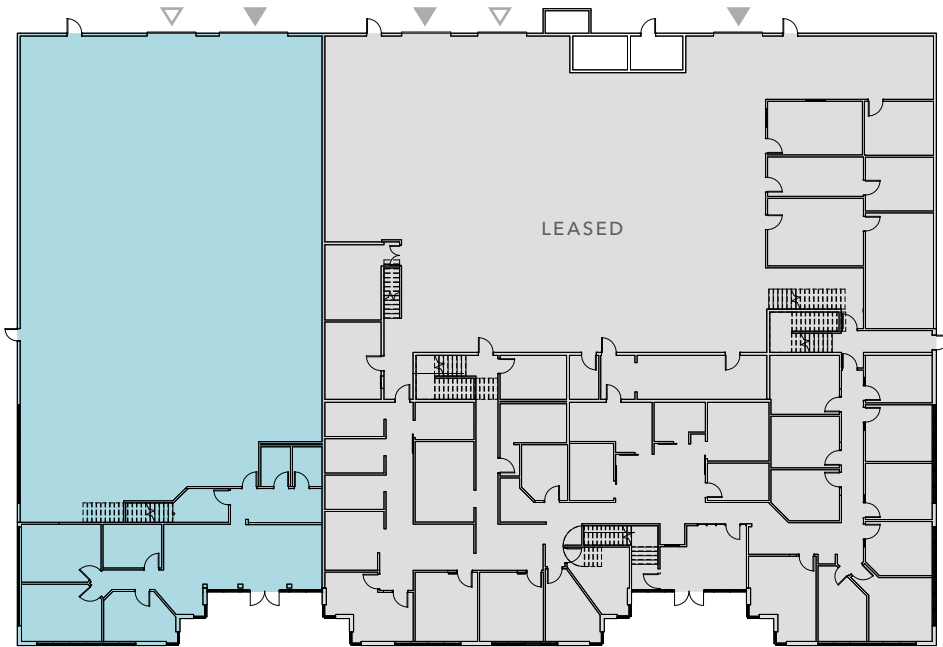
BUILDING FLOOR PLAN

7,668 SF
FIRST FLOOR

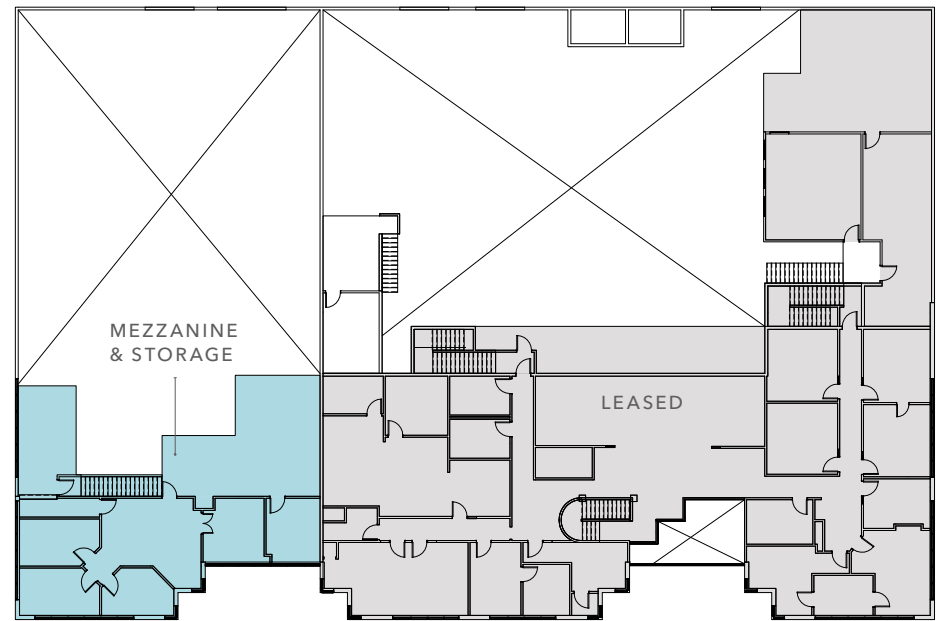
2,371 SF
SECOND FLOOR

10,039 SF
TOTAL SIZE

FIRST FLOOR



SECOND FLOOR



— SUITE A

— NOT AVAILABLE

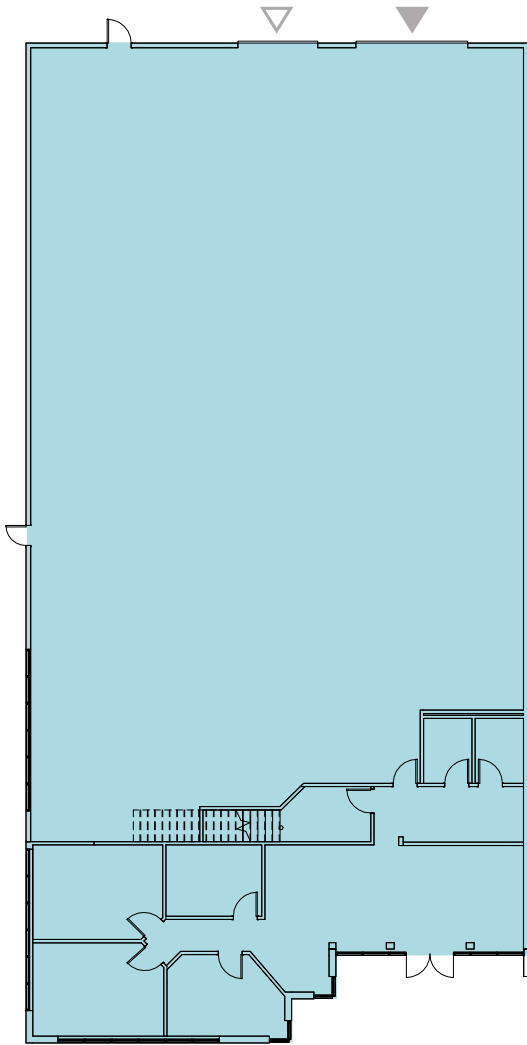
△ DOCK-HIGH DOOR

▲ GRADE-LEVEL DOOR

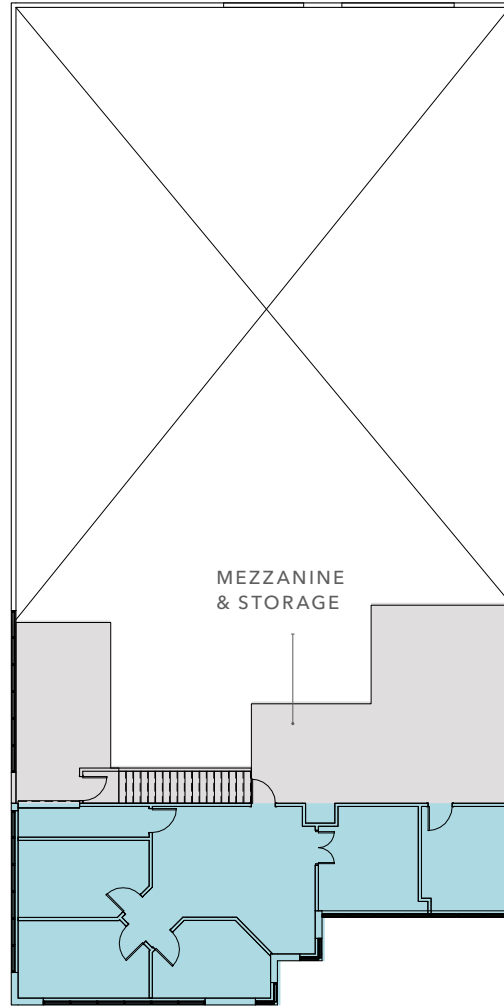


SUITE A

FIRST FLOOR



SECOND FLOOR



4,151 SF





OFFICE

5,888 SF

WAREHOUSE

10,039 SF

TOTAL

-  SUITE A
-  MEZZANINE
-  DOCK-HIGH DOOR
-  GRADE-LEVEL DOOR



14700 NE 95TH ST BUILDING





14700 NE 95TH ST BUILDING

*For more information about
this property, please contact*

TODD GAUTHIER
425.450.1118
todd.gauthier@kidder.com

JASON BLOOM
425.450.1102
jason.bloom@kidder.com

GREG FUCHS
206.992.2727
greg.fuchs@kidder.com

[KIDDER.COM](https://www.kidder.com)

This information supplied herein is from sources we deem reliable. It is provided without any representation, warranty, or guarantee, expressed or implied as to its accuracy. Prospective Buyer or Tenant should conduct an independent investigation and verification of all matters deemed to be material, including, but not limited to, statements of income and expenses. Consult your attorney, accountant, or other professional advisor. All Kidder Mathews designs are the sole property of Kidder Mathews. Branded materials and layouts are not authorized for use by any other firm or person.

