

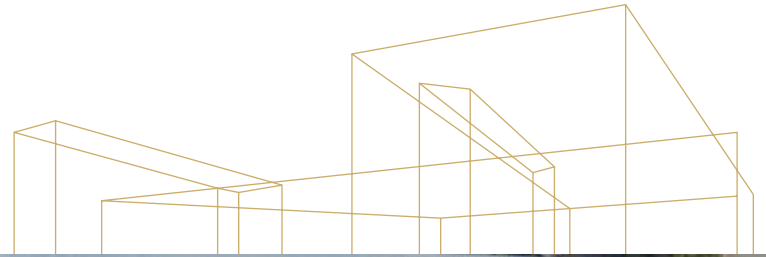
WOODVIEW PARK

10,000 SF industrial space available for lease in Woodinville

14102 NE 189TH ST | WOODINVILLE, WA

WOODVIEW PARK

14102 NE 189TH ST | WOODINVILLE, WA



Suite 100

10,000 SF total

1,130 SF office

1,091 SF mezzanine

7,779 SF warehouse

1 grade-level door

2 dock-high doors

24' clear height

Available 30 days notice

Contact brokers for rental rates:

JASON BLOOM

425.450.1102

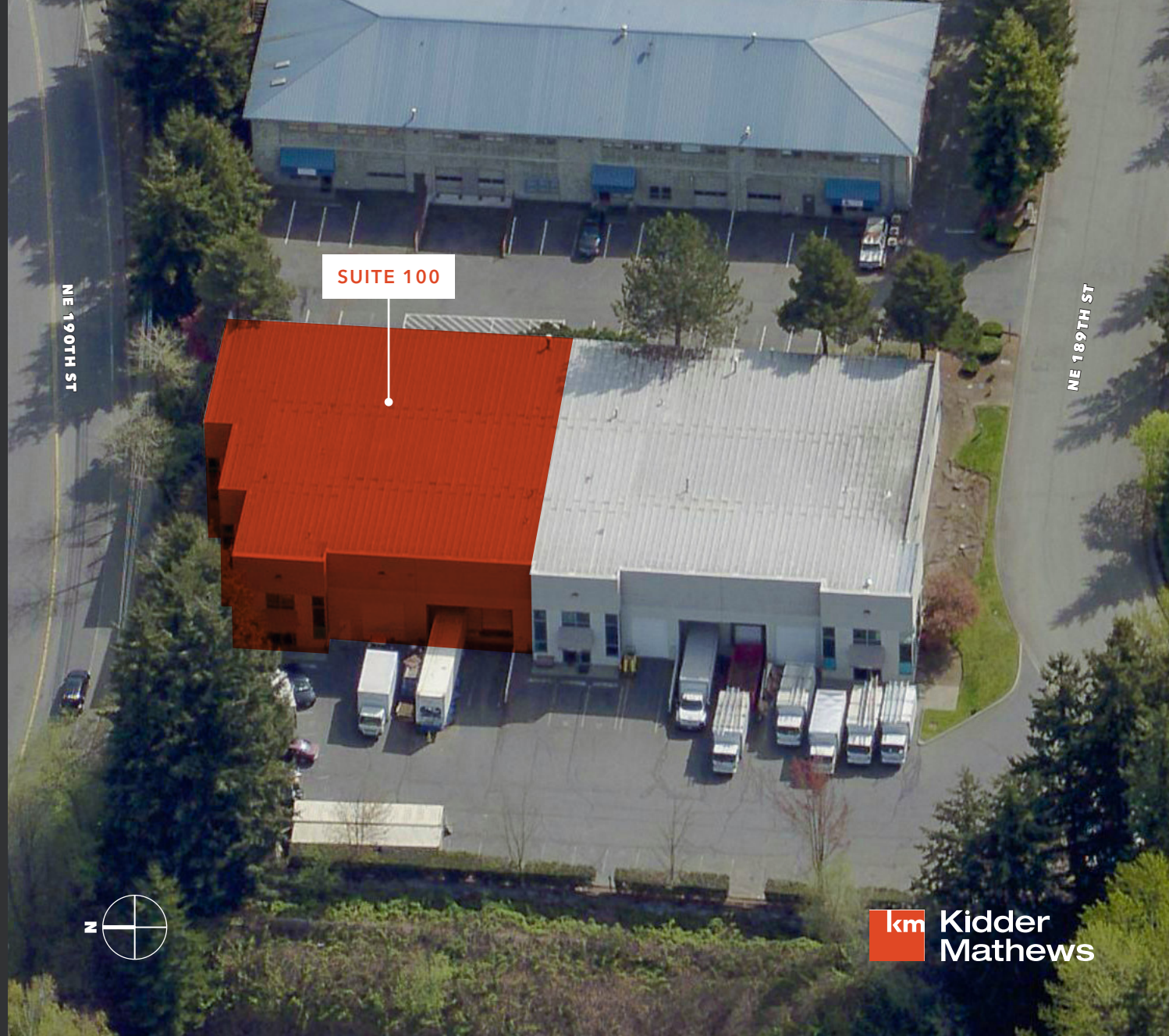
jason.bloom@kidder.com

TODD GAUTHIER

425.450.1118

todd.gauthier@kidder.com

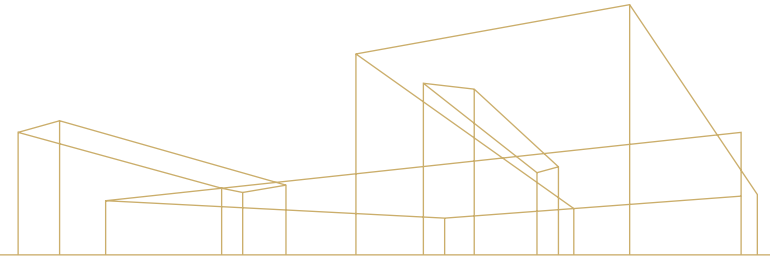
KIDDER.COM



km Kidder
Mathews

WOODVIEW PARK

14102 NE 189TH ST | WOODINVILLE, WA



Suite 100

10,000 SF


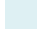


TOTAL

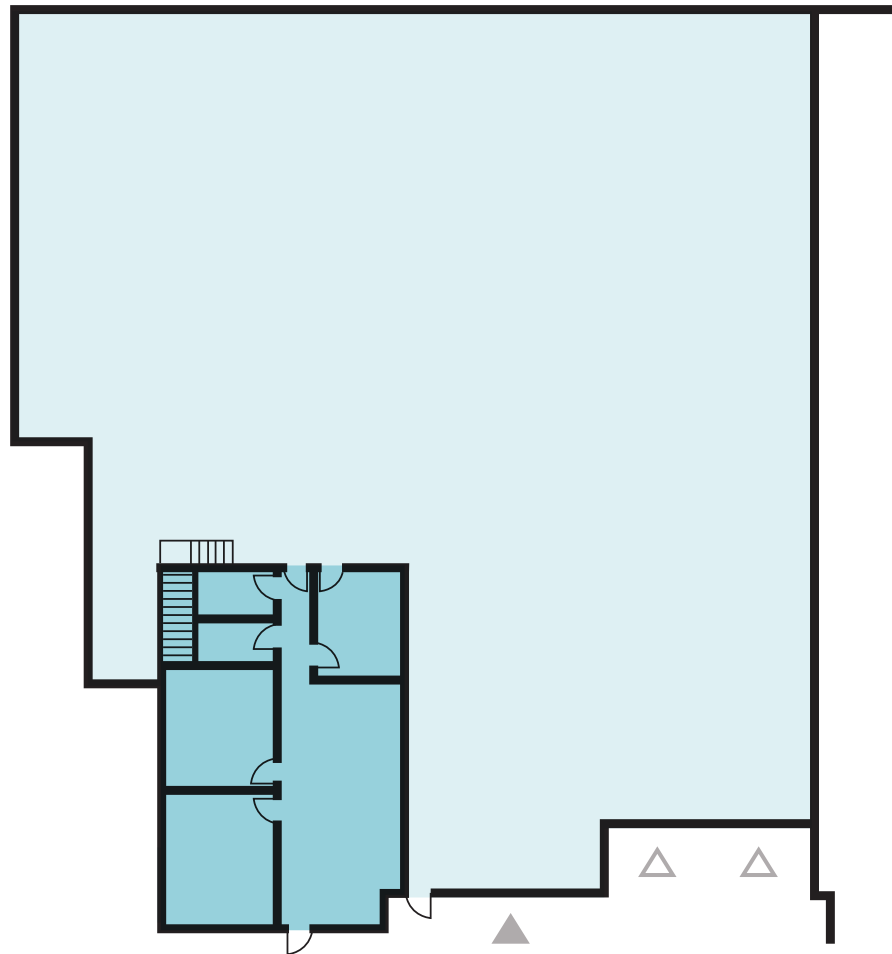
7,779 SF

WAREHOUSE

1,130 SF

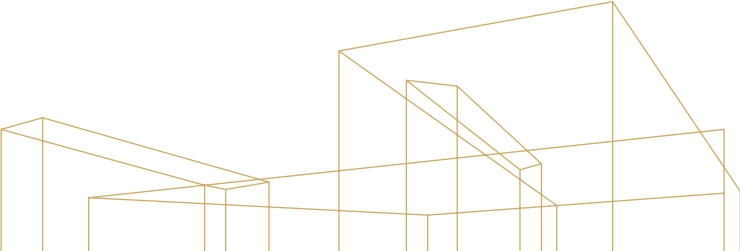
OFFICE

-  OFFICE
-  WAREHOUSE
-  GRADE-LEVEL LOADING
-  DOCK-HIGH LOADING



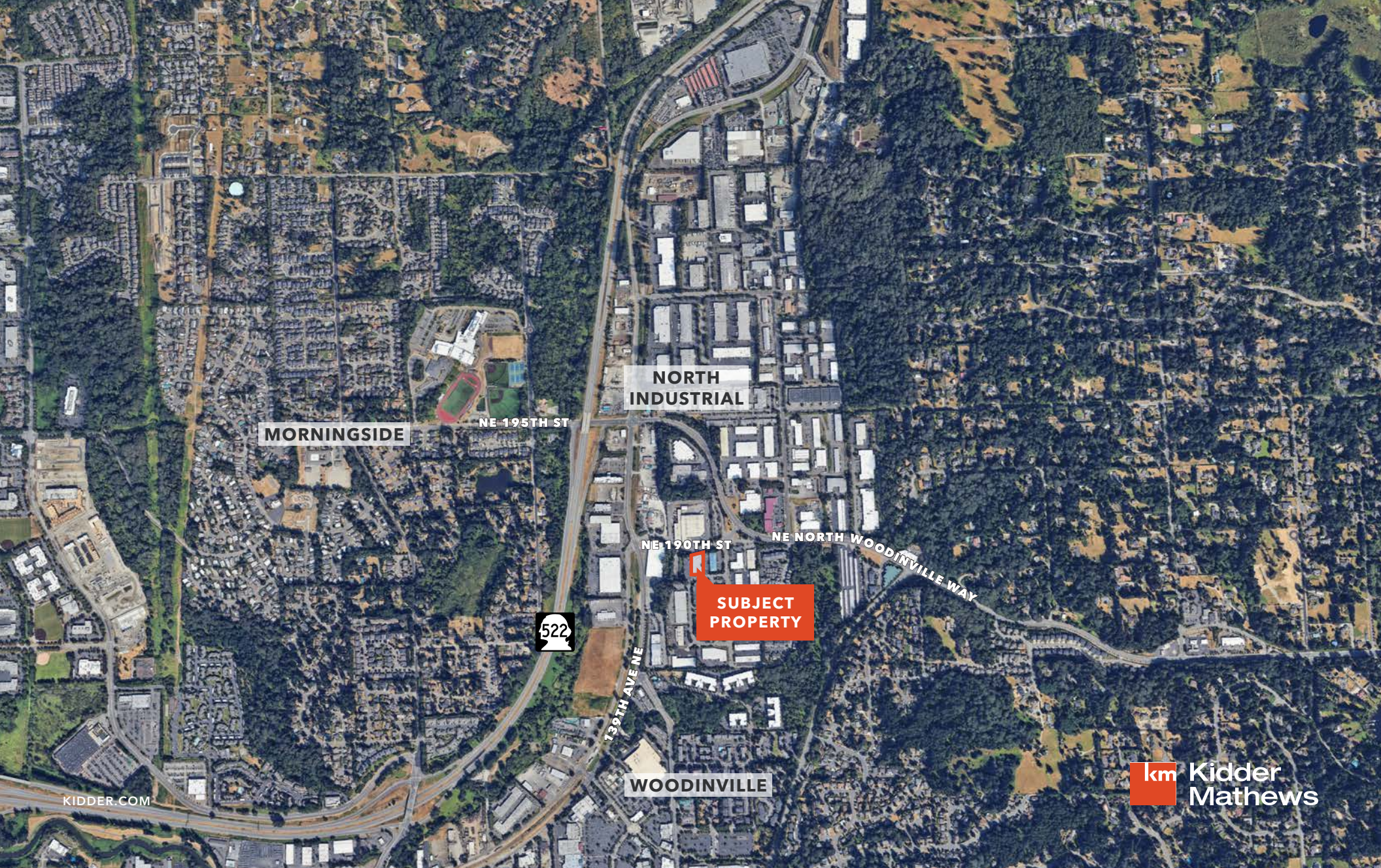
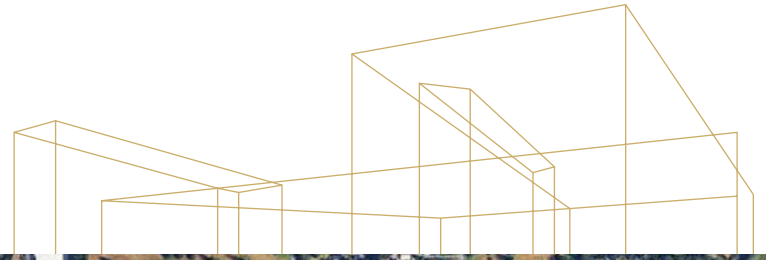
WOODVIEW PARK

14102 NE 189TH ST | WOODINVILLE, WA



WOODVIEW PARK

14102 NE 189TH ST | WOODINVILLE, WA





WOODVIEW PARK

For leasing information contact

JASON BLOOM

425.450.1102

jason.bloom@kidder.com

TODD GAUTHIER

425.450.1118

todd.gauthier@kidder.com

KIDDER.COM

This information supplied herein is from sources we deem reliable. It is provided without any representation, warranty, or guarantee, expressed or implied as to its accuracy. Prospective Buyer or Tenant should conduct an independent investigation and verification of all matters deemed to be material, including, but not limited to, statements of income and expenses. Consult your attorney, accountant, or other professional advisor.

