



REDMOND WILLOWS

Rare opportunity to lease entire 29,085 SF industrial building in in the Redmond Willows submarket

15036 NE 95TH ST | REDMOND, WA 98052



FOR LEASE

Redmond Willows

15036 NE 95TH ST, REDMOND, WA 98052



PROPERTY FEATURES

±29,085 SF total RBA

±25,300 SF yard area

TRUCK COURT 117'

CLEAR HEIGHT 24'

DOCK HIGH 7 doors

GRADE LEVEL 2 doors

CONCRETE-TILT construction

POWER 600 amps, with option to add more

AMPLE parking

CONTACT agents for lease rates

AVAILABLE May 1, 2023

TODD GAUTHIER

425.450.1118

todd.gauthier@kidder.com

JASON BLOOM

425.450.1102

jason.bloom@kidder.com

KIDDER.COM

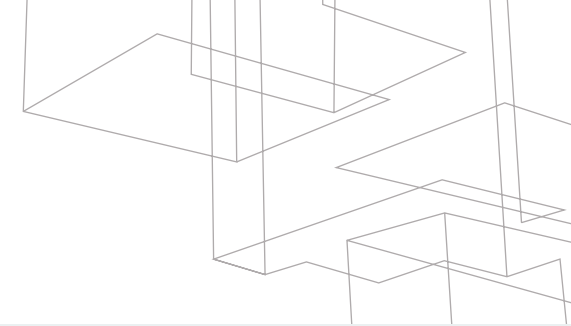
This information supplied herein is from sources we deem reliable. It is provided without any representation, warranty, or guarantee, expressed or implied as to its accuracy. Prospective Buyer or Tenant should conduct an independent investigation and verification of all matters deemed to be material, including, but not limited to, statements of income and expenses. Consult your attorney, accountant, or other professional advisor.

 **Kidder Mathews**

FOR LEASE

Redmond Willows

15036 NE 95TH ST, REDMOND, WA 98052



Suite A

10,590

TOTAL SF

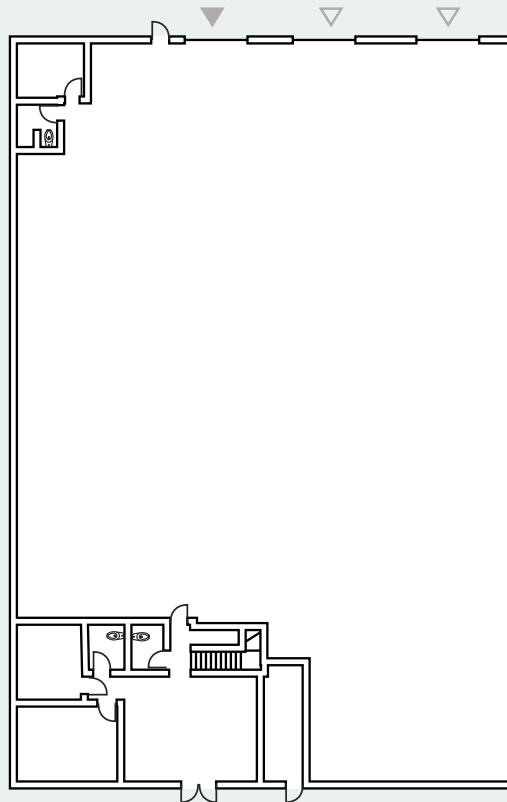
8,464

WAREHOUSE SF

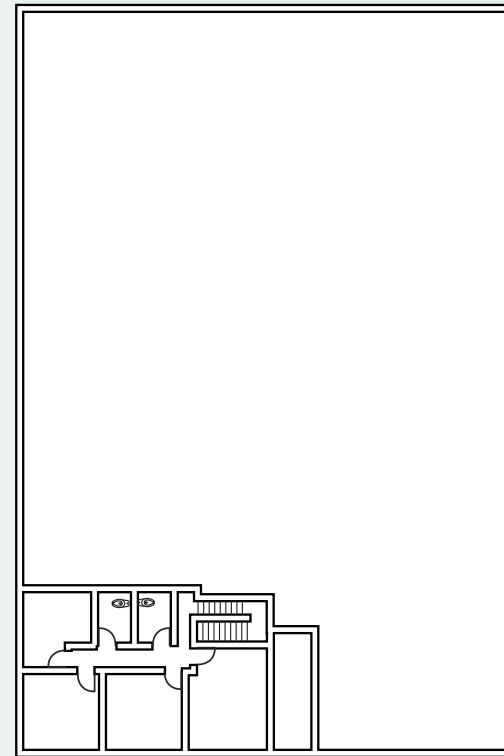
2,069

OFFICE SF

FIRST FLOOR



SECOND FLOOR



▲ GRADE-LEVEL DOOR

△ DOCK-LEVEL DOOR



KIDDER.COM

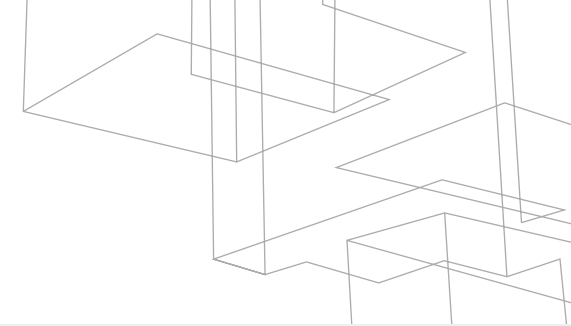
This information supplied herein is from sources we deem reliable. It is provided without any representation, warranty, or guarantee, expressed or implied as to its accuracy. Prospective Buyer or Tenant should conduct an independent investigation and verification of all matters deemed to be material, including, but not limited to, statements of income and expenses. Consult your attorney, accountant, or other professional advisor.

km Kidder Mathews

FOR LEASE

Redmond Willows

15036 NE 95TH ST, REDMOND, WA 98052



Suite B

FIRST FLOOR

SECOND FLOOR

18,495

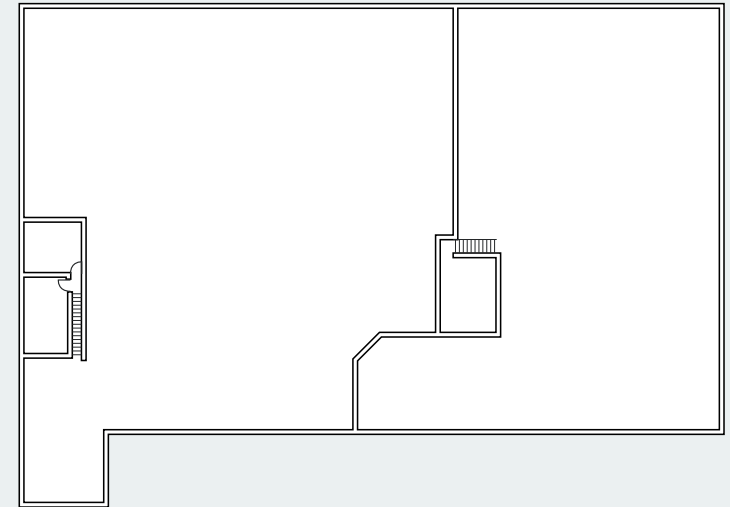
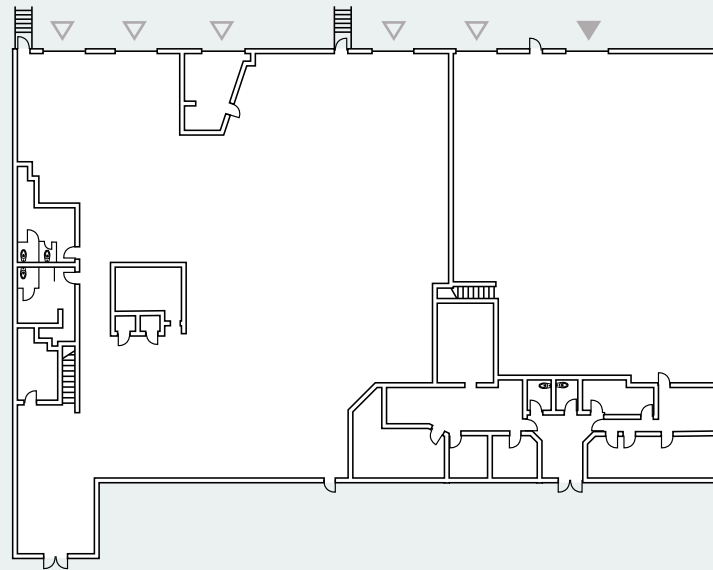
TOTAL SF

14,580

WAREHOUSE SF

3,479

OFFICE SF



▲ GRADE-LEVEL DOOR

△ DOCK-LEVEL DOOR



KIDDER.COM

This information supplied herein is from sources we deem reliable. It is provided without any representation, warranty, or guarantee, expressed or implied as to its accuracy. Prospective Buyer or Tenant should conduct an independent investigation and verification of all matters deemed to be material, including, but not limited to, statements of income and expenses. Consult your attorney, accountant, or other professional advisor.

km Kidder Mathews

FOR LEASE

Redmond Willows

15036 NE 95TH ST, REDMOND, WA 98052

Suites A & B Combined

29,085

TOTAL SF

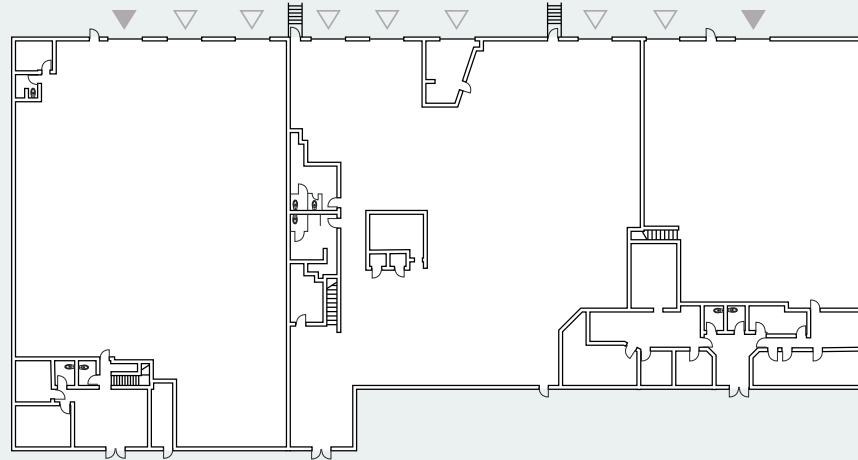
23,044

WAREHOUSE SF

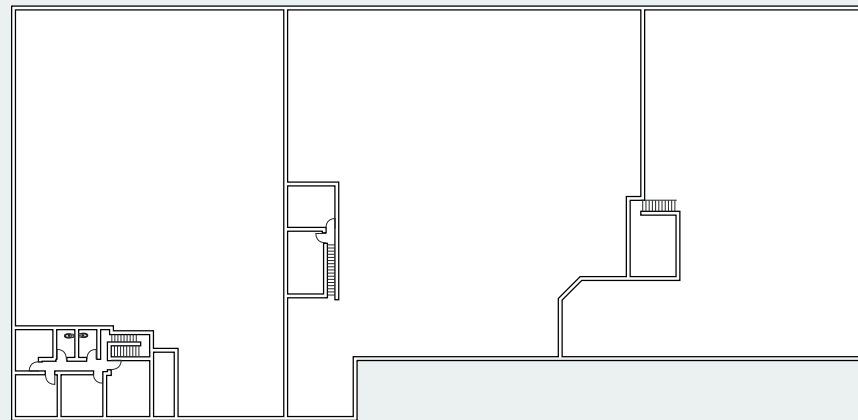
4,014

OFFICE SF

FIRST FLOOR



SECOND FLOOR



▲ GRADE-LEVEL DOOR

△ DOCK-LEVEL DOOR



KIDDER.COM

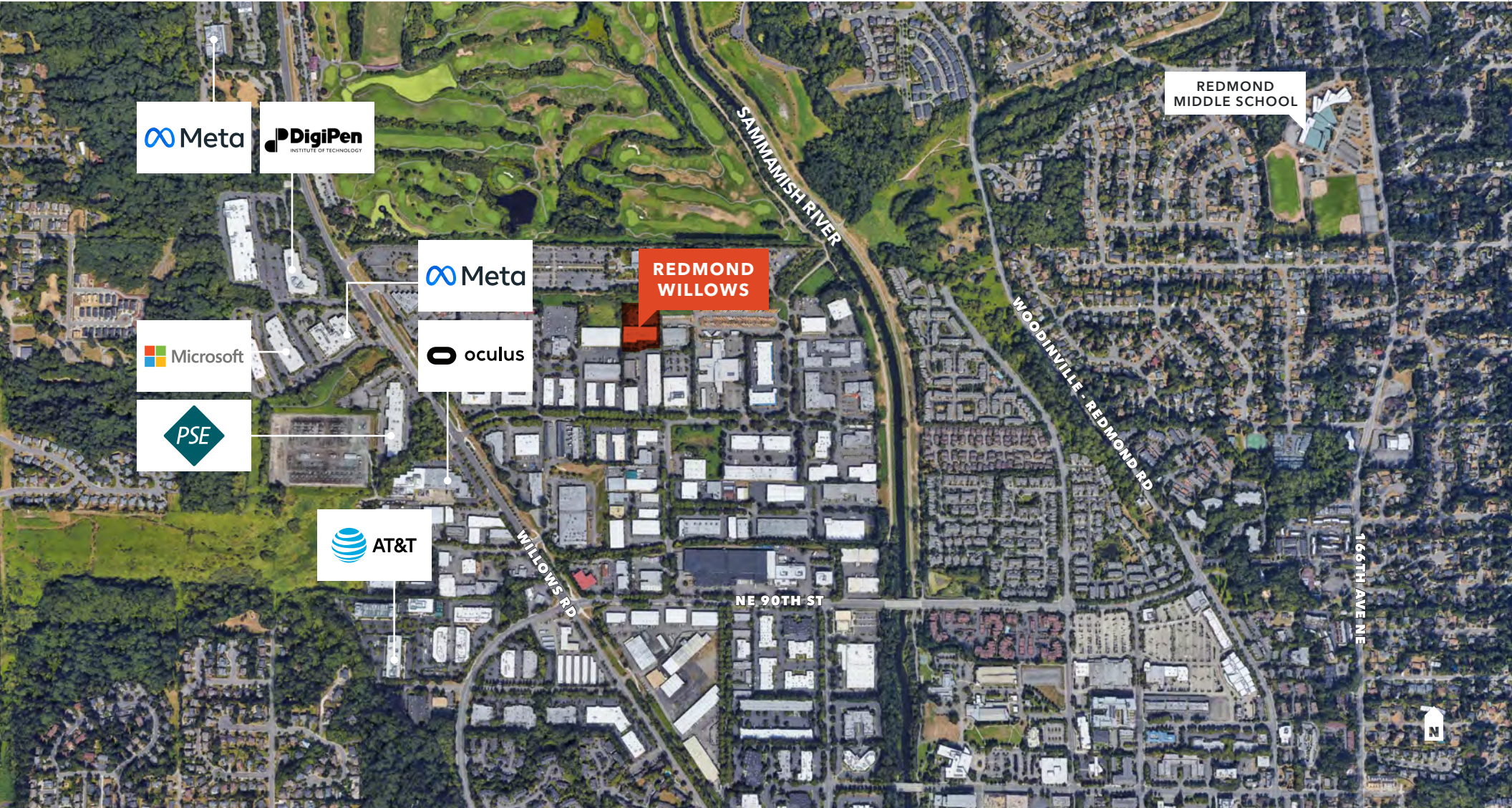
This information supplied herein is from sources we deem reliable. It is provided without any representation, warranty, or guarantee, expressed or implied as to its accuracy. Prospective Buyer or Tenant should conduct an independent investigation and verification of all matters deemed to be material, including, but not limited to, statements of income and expenses. Consult your attorney, accountant, or other professional advisor.

km Kidder Mathews

FOR LEASE

Redmond Willows

15036 NE 95TH ST, REDMOND, WA 98052



KIDDER.COM

This information supplied herein is from sources we deem reliable. It is provided without any representation, warranty, or guarantee, expressed or implied as to its accuracy. Prospective Buyer or Tenant should conduct an independent investigation and verification of all matters deemed to be material, including, but not limited to, statements of income and expenses. Consult your attorney, accountant, or other professional advisor.

km Kidder Mathews

FOR LEASE

Redmond Willows

15036 NE 95TH ST, REDMOND, WA 98052



For lease rates
and property
information,
please contact

TODD GAUTHIER

425.450.1118

todd.gauthier@kidder.com

JASON BLOOM

425.450.1102

jason.bloom@kidder.com

KIDDER.COM

This information supplied herein is from sources we deem reliable. It is provided without any representation, warranty, or guarantee, expressed or implied as to its accuracy. Prospective Buyer or Tenant should conduct an independent investigation and verification of all matters deemed to be material, including, but not limited to, statements of income and expenses. Consult your attorney, accountant, or other professional advisor.

 **Kidder
Mathews**